

Before creating the **DominoDefrag** project on your workstation the following prerequisites are required:

- Visual Studio 2010 C++ Express Edition has been installed.
 - See <http://www.microsoft.com/express/download/>
- The **c:\notesapi** directory has been extracted from “CZN2HEN.zip” (IBM Lotus C API Toolkit for Notes and Domino 8.5.2 for Windows 32 and 64 bit English) from the “Lotus C API Toolkit for Notes and Domino 8.5.2 Multiplatform” selection
 - See <http://www.ibm.com/developerworks/lotus/downloads/toolkits.html>

Lotus Support

Related links

- Warranties and maintenance

Lotus Support

Downloads


Lotus Support for AIX 5L V5, AIX 6, IBM i (i5 formerly i5/OS V5), IBM i (i6 formerly i5/OS V6), Solaris SPARC Platform Edition, SUSE Linux Enterprise Server (SLES), Windows Server 2003

Lotus C API Toolkit for Notes and Domino 8.5.2 Multiplatform English International

To download using http, click on 'Download now'.

IBM Lotus C API Toolkit for Notes and Domino 8.5.2 for Windows 32 and 64 bit English

CZN2HEN.zip (20 MB)

 Download now

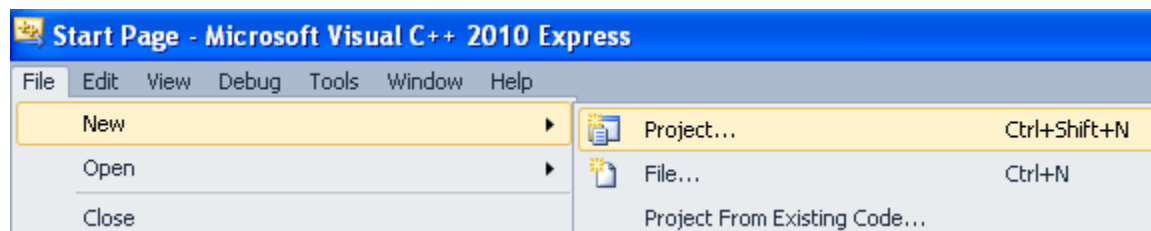
Need help?

→ Sign up support (English only)

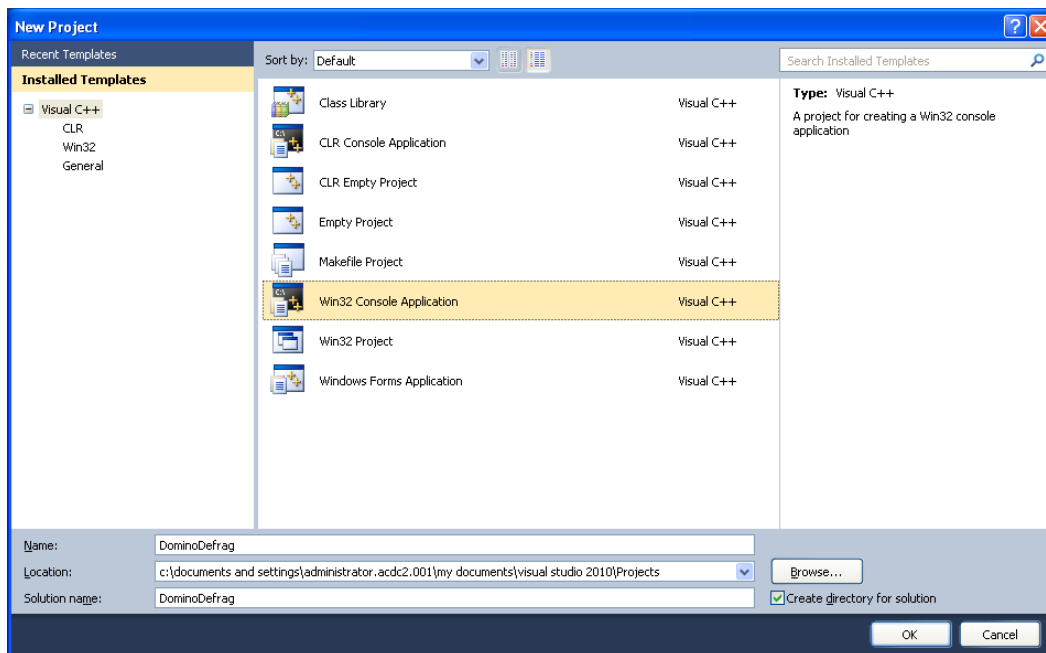
→ Sign up and Software Download FAQ

→ Software download support (English only)

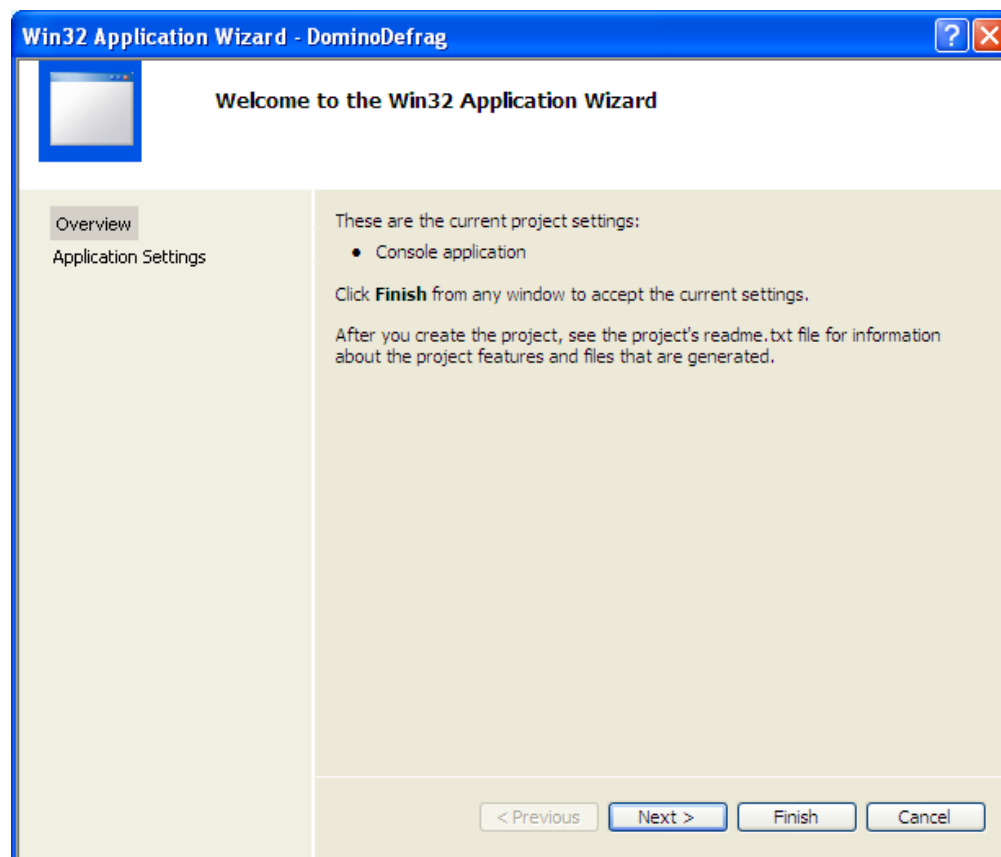
Now to start.....



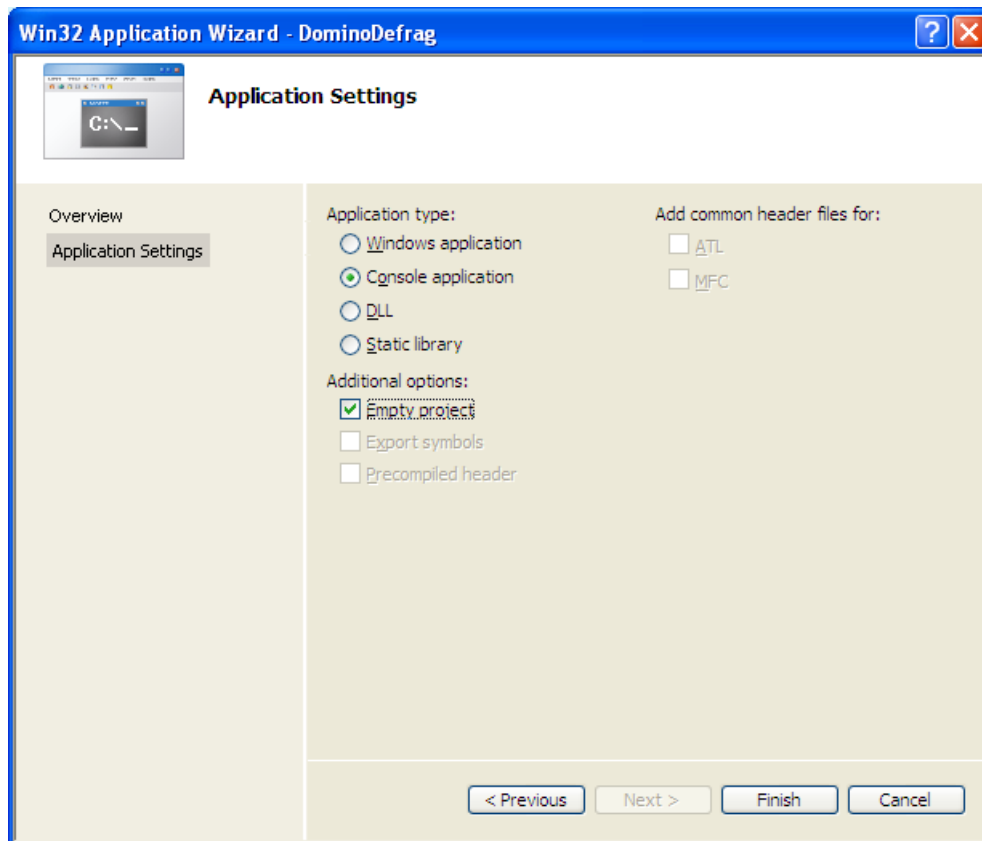
File -> New -> Project



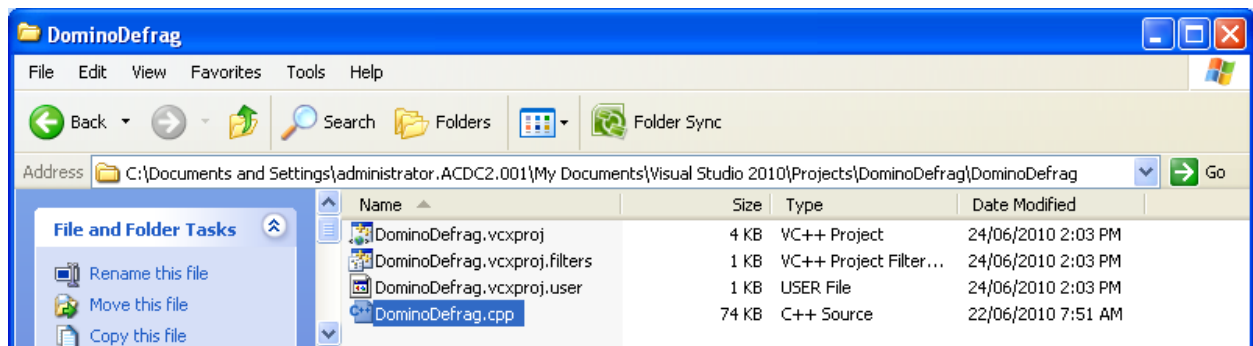
Project Type -> **Win32** and **Win32 Console Application**, Name -> **DominoDefrag** and Click **OK**



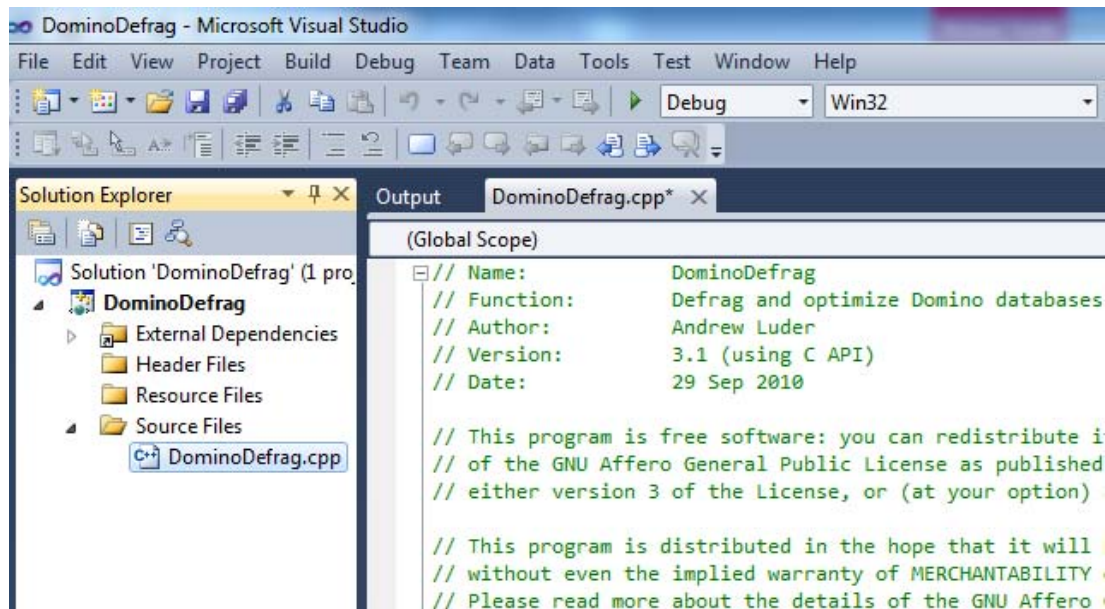
Click **Next**



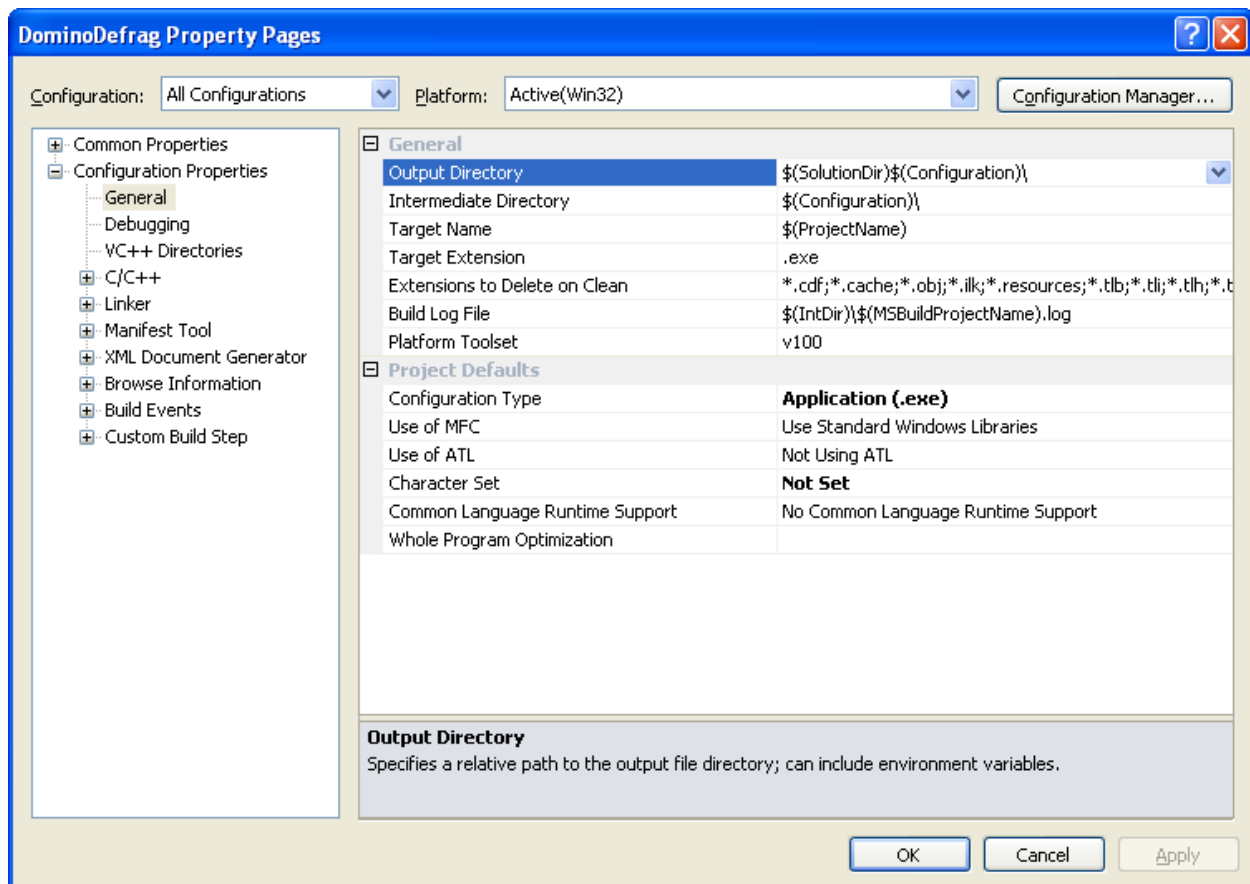
Application type -> **Console application**, additional options -> **Empty project**, and then click **Finish**



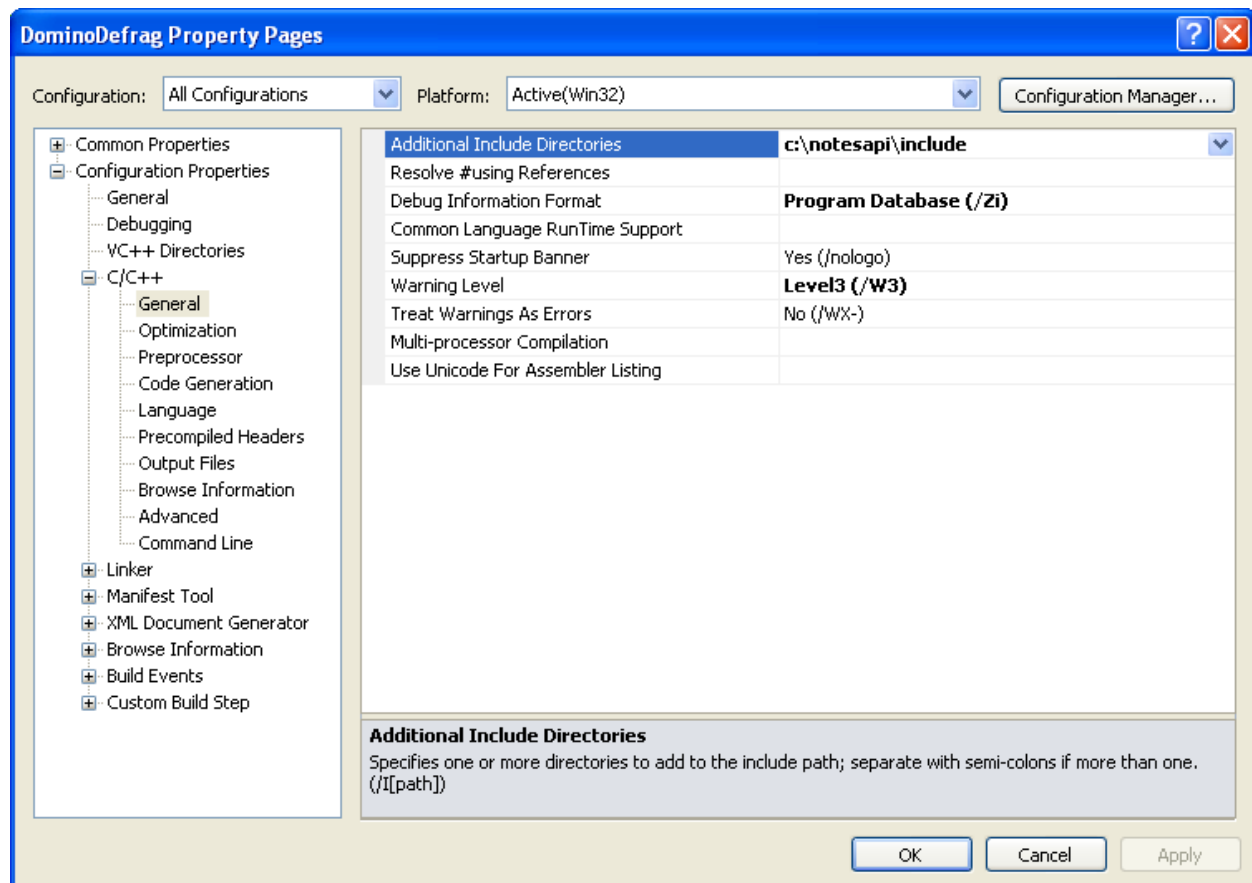
Open your Documents link and copy the **DominoDefrag.cpp** file into the **Visual Studio 2010\Projects\DominoDefrag\DominoDefrag** folder



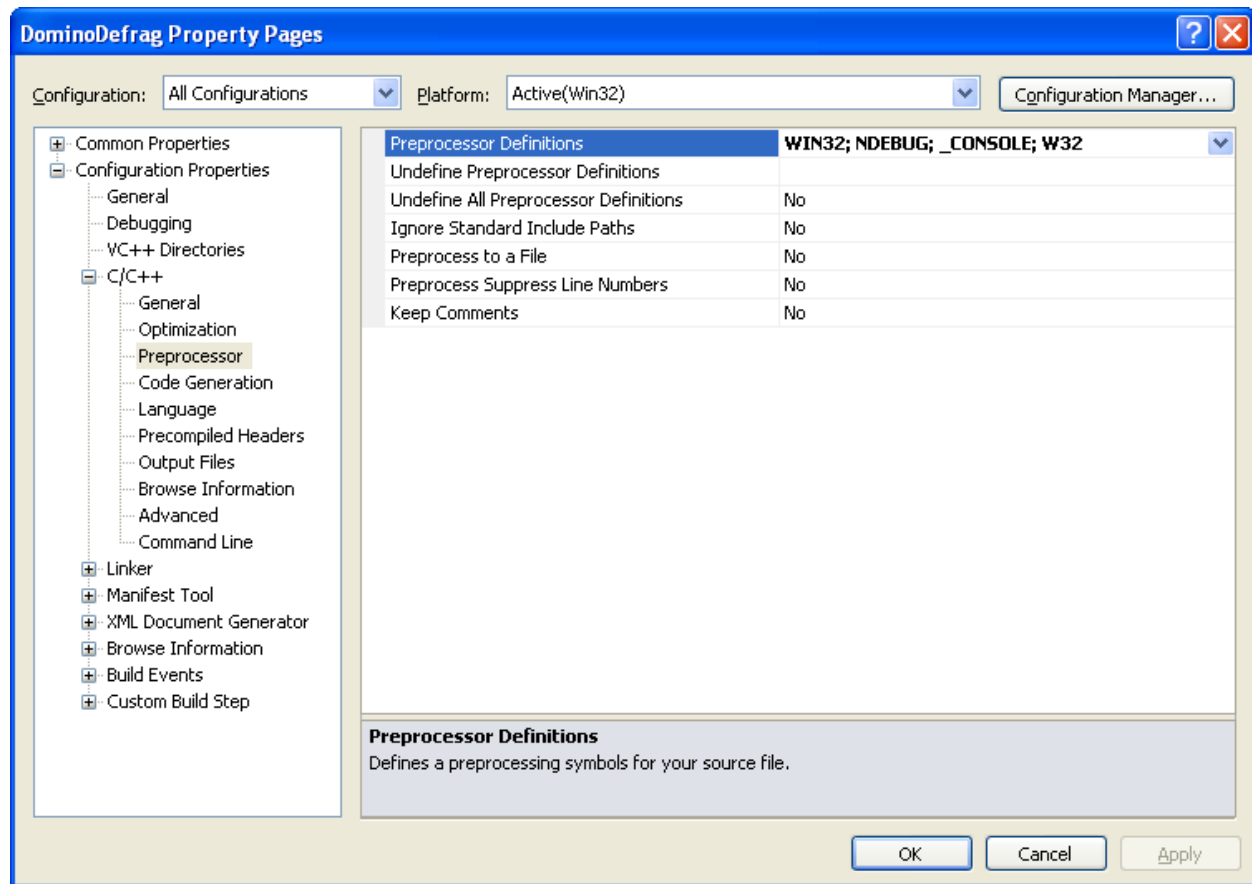
Go to **DominoDefrag** Source Files and add **DominoDefrag.cpp** as an Existing Item



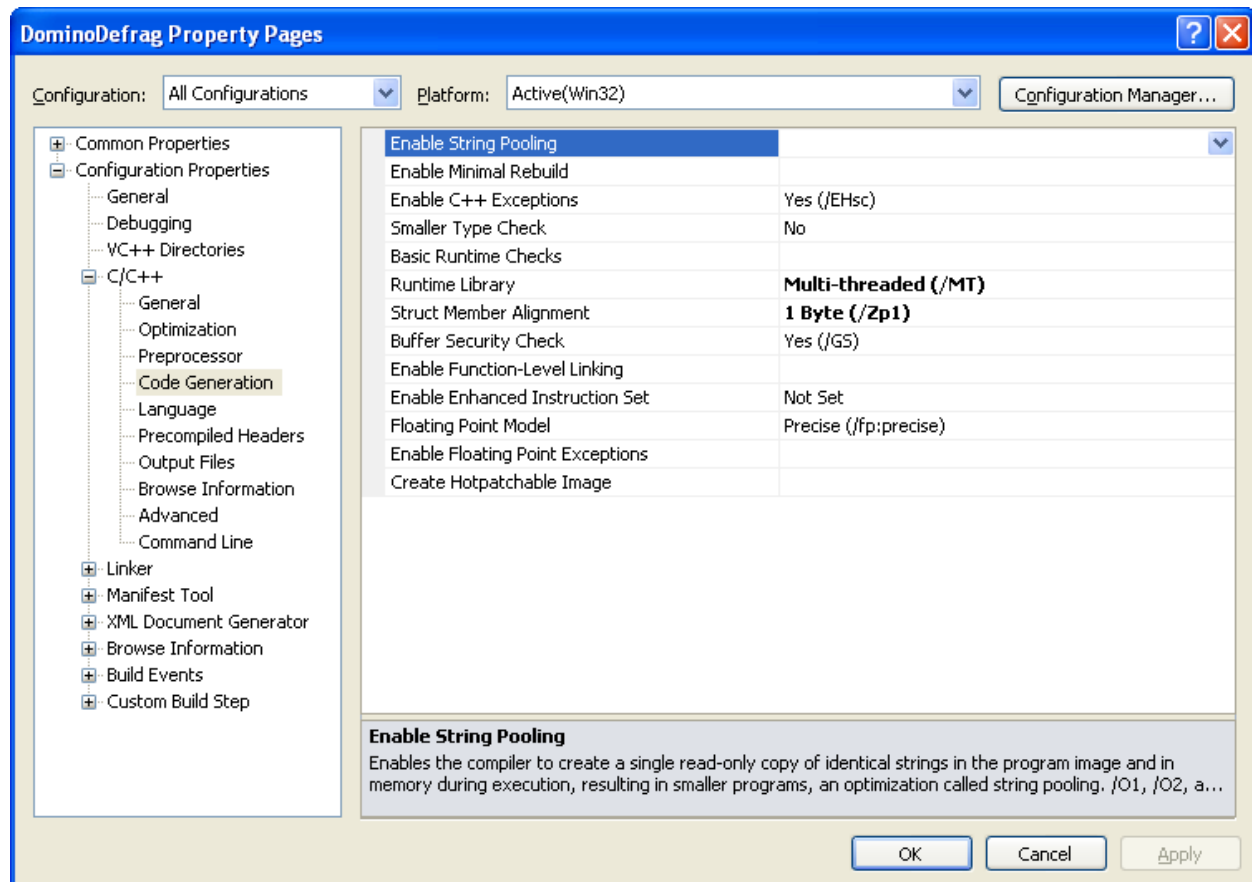
Go to DominoDefrag Property Pages. Make sure Configuration -> **All Configurations** and then go to Configuration Properties -> General -> Character Set and change to **Not Set** and then click **Apply**.



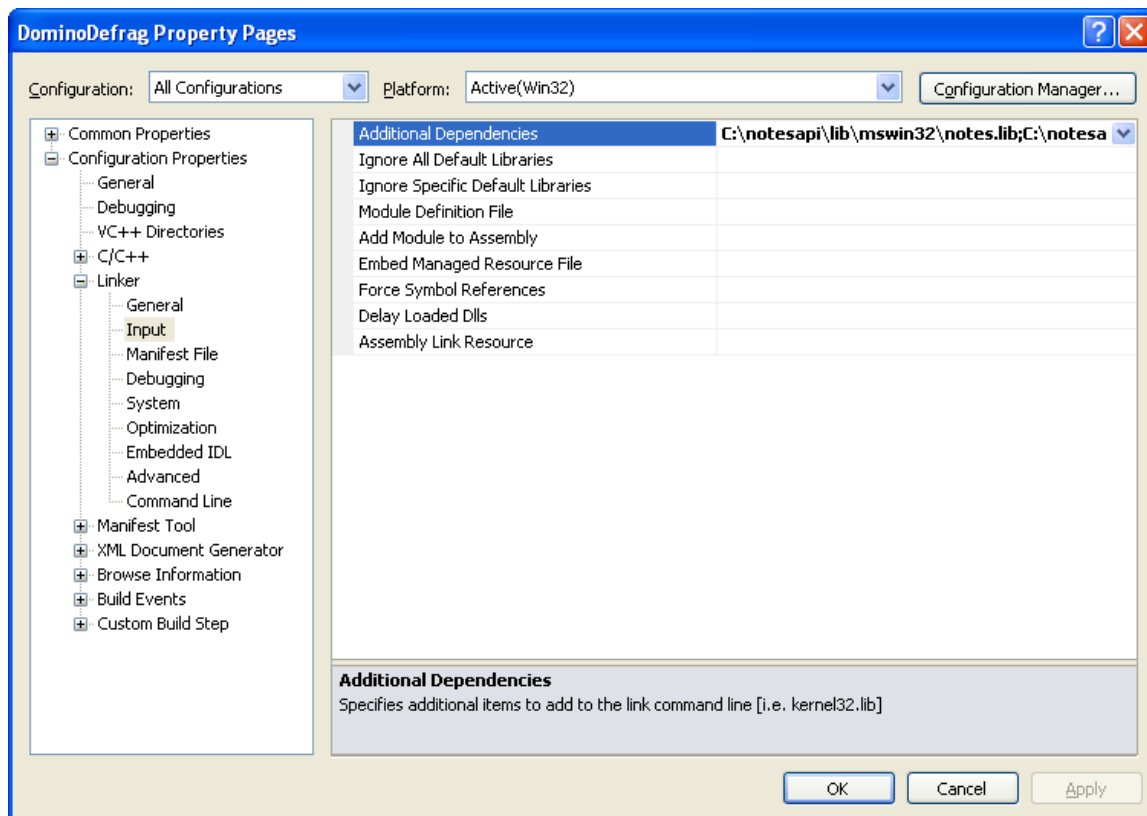
Go to DominoDefrag Property Pages -> C/C++ > General -> Additional Include Libraries and change to **c:\notesapi\include** and Debug Information Format and change to **Program Database (/ZI)** and then click **Apply**.



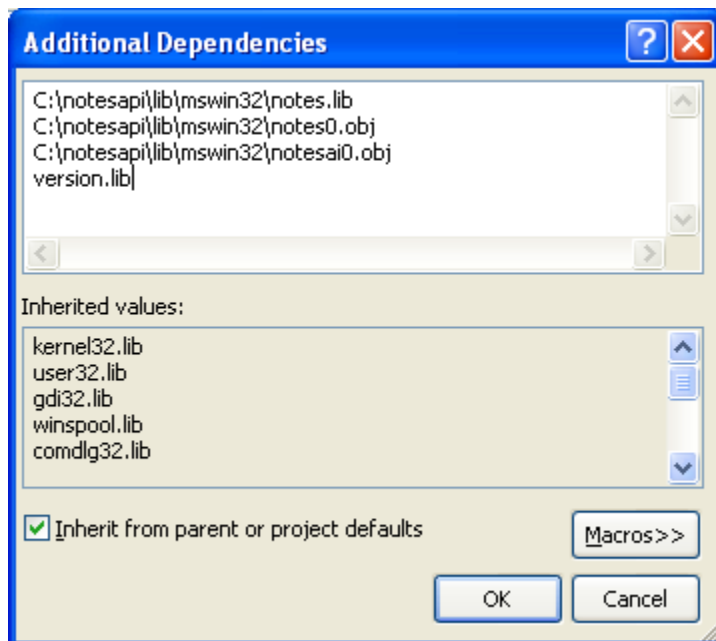
Go to DominoDefrag Property Pages -> C/C++ > Preprocessor -> Preprocessor Definitions and change to **WIN32; NDEBUG; _CONSOLE; W32** and then click **Apply**.

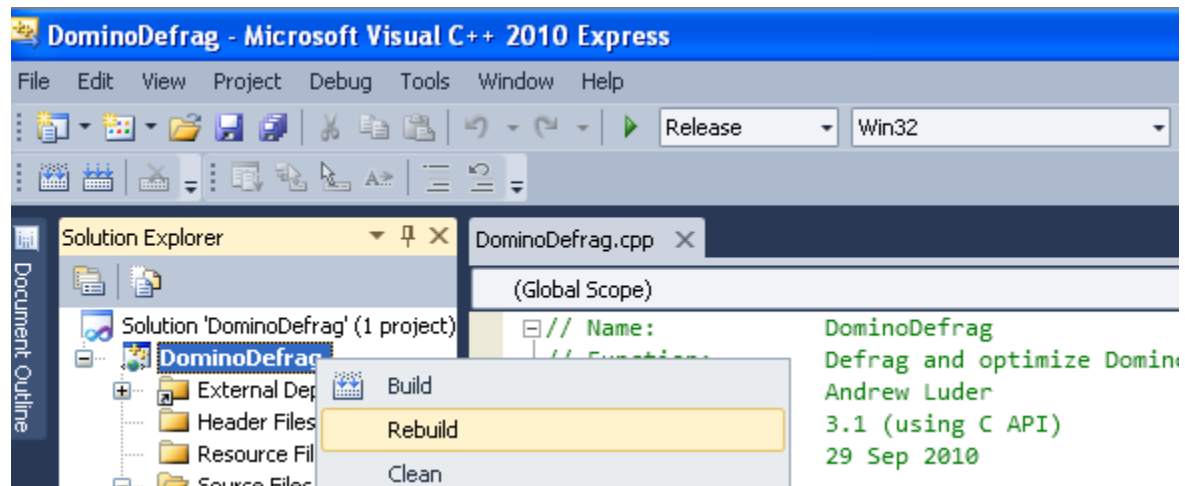


Go to DominoDefrag Property Pages -> C/C++ > Code Generation -> Runtime Library and change to **Multi-threaded (/MT)** and Struct Member Alignment and change to **1 Byte (/Zp1)** and then click **Apply**.



Go to DominoDefrag Property Pages -> Linker -> Input -> Additional Dependencies and change to
C:\notesapi\lib\mswin32\notes.lib
C:\notesapi\lib\mswin32\notes0.obj
C:\notesapi\lib\mswin32\notesai0.obj
version.lib





Right-click project and click Rebuild